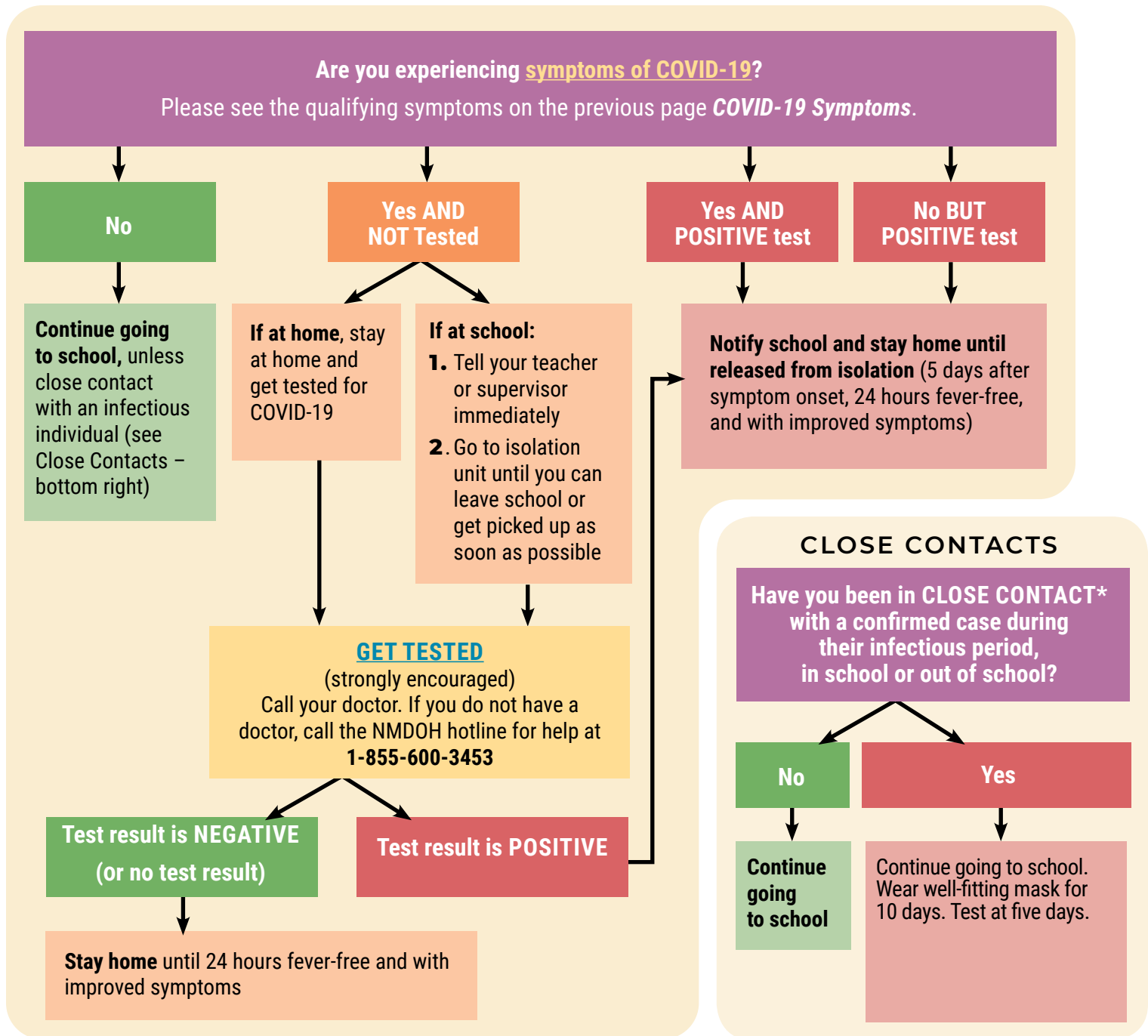


School Staff & Student Decision Tree

The following decision tree was created for families, students, and staff to better understand the steps that should be taken if an individual develops symptoms. Close contacts who are up to date with vaccination (including boosters for those eligible) are not required to quarantine and are encouraged (not required) to test 5 days after exposure or at onset of symptoms. Exposed contacts who are not up to date with COVID-19 vaccinations are recommended to continue to attend school wearing a well-fitting mask for 10 days and be tested at day five following the exposure



Symptoms in a Recovered Individual: If a person is positive for COVID-19, completes their self-isolation, recovers, and then develops new COVID-like symptoms within 90 days of their first infection, they should stay home until fever-free for at least 24 hours without fever-reducing medication and with improvement in symptoms. They may consider consulting their healthcare provider for additional guidance. If a person who was positive for COVID-19 more than 90 days ago develops new COVID-like symptoms, they should follow the same guidance as for someone who was never previously a case.

*See definition of Close Contact on page 3.